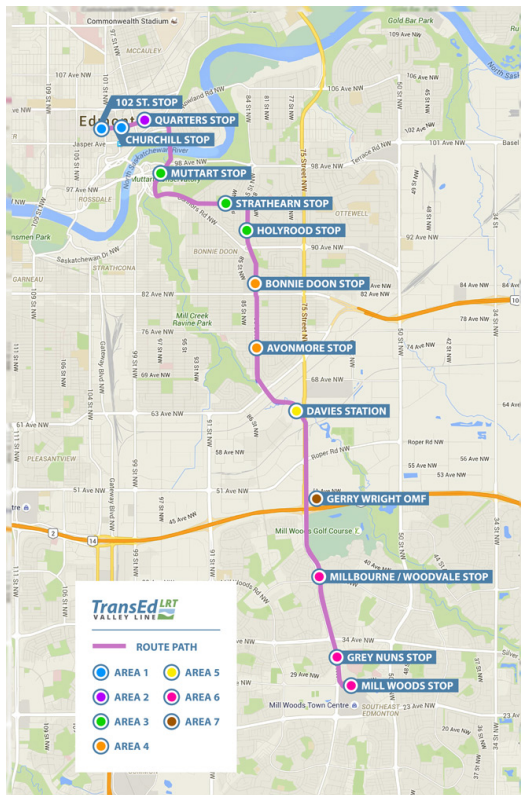


Valley Line Southeast LRT and the Francis Winspear Centre for Music

If this is your first time visiting the Downtown, or if it's been a while since you visited the area, there are a few things you should know to make sure you and your group stay safe around the new street-level LRT system.

About the Valley Line Southeast LRT

The Valley Line Southeast LRT is a new train in Edmonton that runs from downtown to Millwoods. It is a low-floor train that is designed to integrate with the communities that it runs through. It is not open for riders yet, but trains are actively being tested during daytime, evening and late night hours, seven days a week.



The Valley Line is different from the existing Capital and Metro Line LRT systems in Edmonton that run between Century Park and Clareview. Since the low-floor Valley Line system is new, there are a few key features to be aware of:

- **Valley Line trains share the road with you.** The train generally runs either alongside or parallel to traffic. There are limited fences or barriers between the tracks and vehicle and bike lanes or sidewalks.
- **Valley Line trains move at community speeds.** That means they will travel at road speed limits. The train is designed to move with the flow of traffic. The train, traffic and pedestrian signals are integrated together to keep everyone safe.
- **There are no bells, flashing lights or crossing arms** to indicate a train will be moving through an intersection. Instead, drivers and pedestrians will need to pay attention to traffic signs and signals to know when and where it is safe to travel.

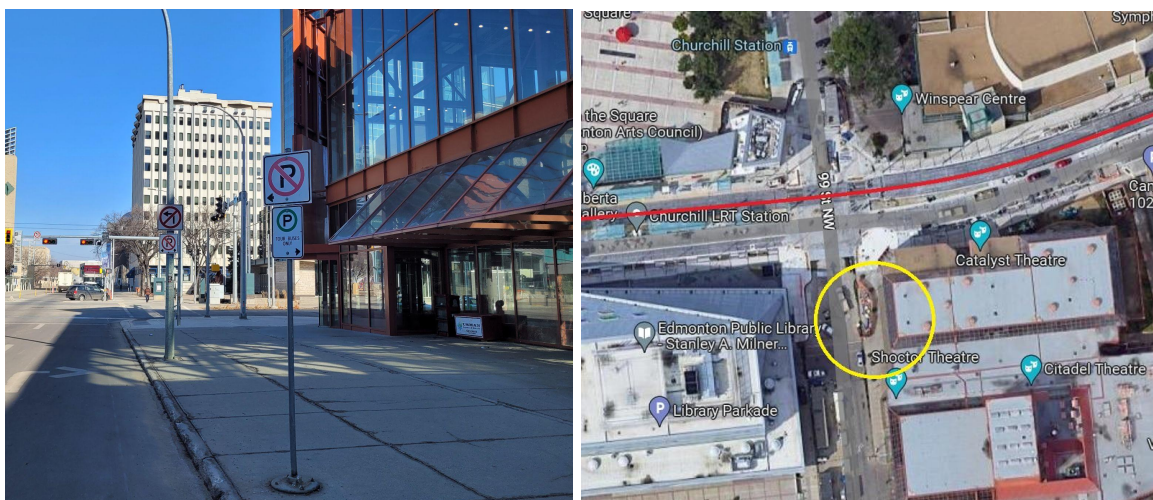
Changes for motorists

There are also some important changes to turning rules for drivers to know. Many intersections alongside the route now have “**No Right Turn on Red**” signs. This means that even if there is no oncoming vehicle traffic, motorists are not allowed to turn right when the light is red. At some intersections there are new traffic signals for drivers wanting to turn right. It is important to always obey these signs and signals because a train may be moving through the intersection.



Downtown along 102 Avenue there are also **no left turns** allowed for motorists at many intersections, including at 99 Street where Winspear is located. These intersections are clearly marked with signage, so make sure to pay attention and be safe!

Drivers, as you approach the area near where the Winspear is located, you may be tempted to drop students off on the northeast corner of 99th Street and 102 Ave. We do not advise this, as doing so will mean other vehicles traveling behind you may end up stopped on the LRT tracks, which is indicated below in red. Vehicles cannot be parked or stopped on the tracks at any time. Instead, we suggest that you park on 99th Street next to the Citadel (marked in yellow), where passengers can safely get off their bus and use the marked crosswalk to finish their walk to Winspear.



Signs in front of the Citadel Theatre (99 St & 102 Ave) indicate where it is safe to park buses to drop off and pick up students.

Pedestrian safety

For those traveling on foot, the same level of caution and attention will be required as drivers to navigate downtown. Please take special care to only cross the tracks at marked intersections, and only when the pedestrian crossing lights indicate it is safe to do so. All pedestrian crossings along the Valley Line Southeast have audible signals and countdown timers. Press and hold the button for a few seconds to activate the audible signal. Always pay attention to your surroundings, and **when you see tracks, expect a train.**



For more information on the Valley Line Southeast LRT, go to edmonton.ca/valleylinesoutheast, or contact us via email at lrtprojects@edmonton.ca.